

## WIFI at the BC : Windows 7 setup

The Biblioteca de Catalunya has a communications wireless network (Wi-Fi) to make easier the work of their users and researchers.

To connect, click the wireless connection icon at the taskbar:




This action will open a window showing the available wifi networks detected by your device. If none is detected click *Refresh network list*.

The wireless network at the Biblioteca de Catalunya is called **Biblioteca de Catalunya**. Select it and click the *Connect* button.



Connect and then open the Internet browser.

Once connected to BC network the following page will open:



The screenshot shows a login page titled "Wifi BC" with the Biblioteca de Catalunya logo in the top right corner. The page contains two input fields: "Codi de barres" (Barcode code) and "Contrasenya" (Password). Below the password field is a grey button labeled "Entrar" (Enter).

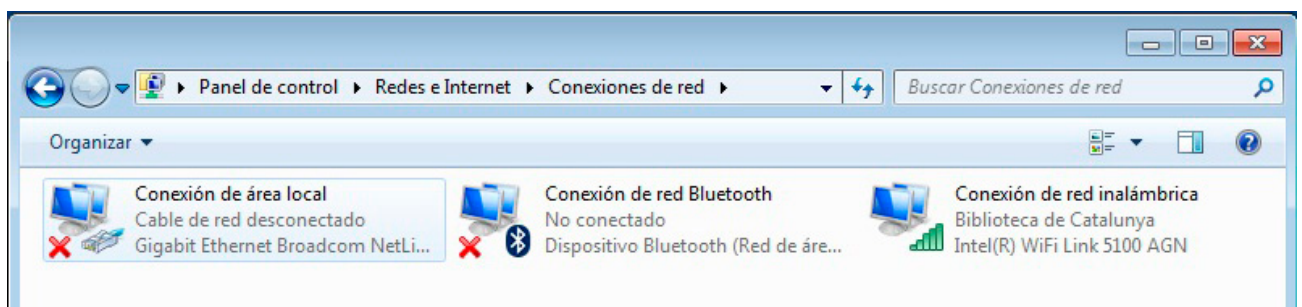
Enter the BC barcode number and your identity ID as it appears on the BC printed card, but the final letter in lowercase and without spaces or dashes.

## Possible problems connecting to the WiFi network

1. Make sure you have the wireless connected.

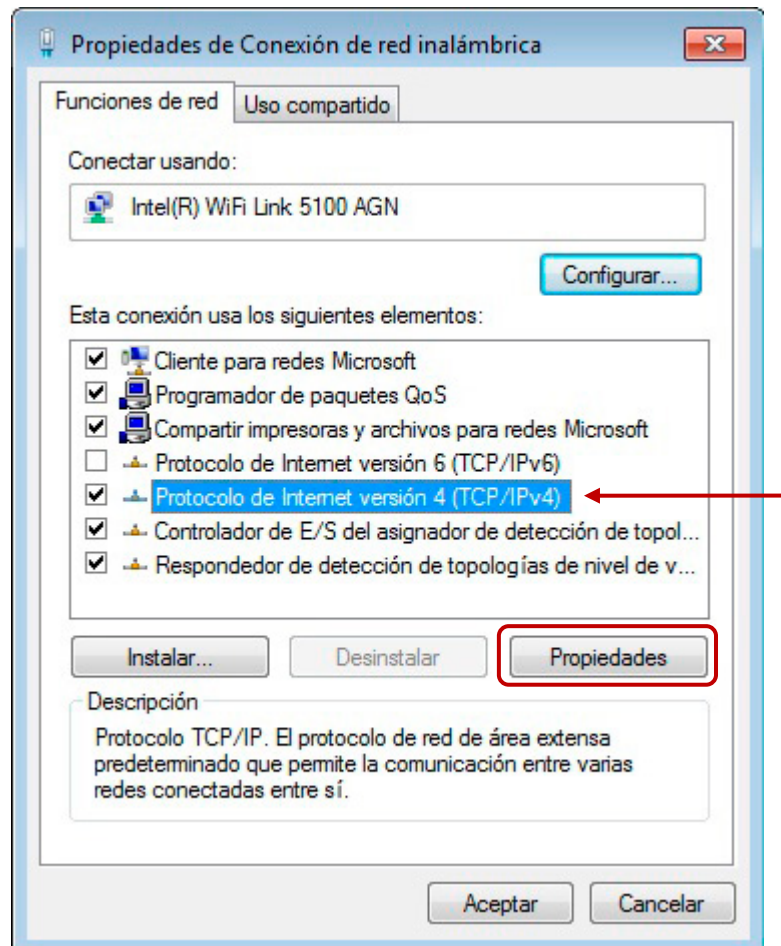


2. Make sure you have no other network connections connected that may interfere with the wireless connection. If you have, disable them and try to connect again. It is also advisable to disable the wireless network and then re-enable it.

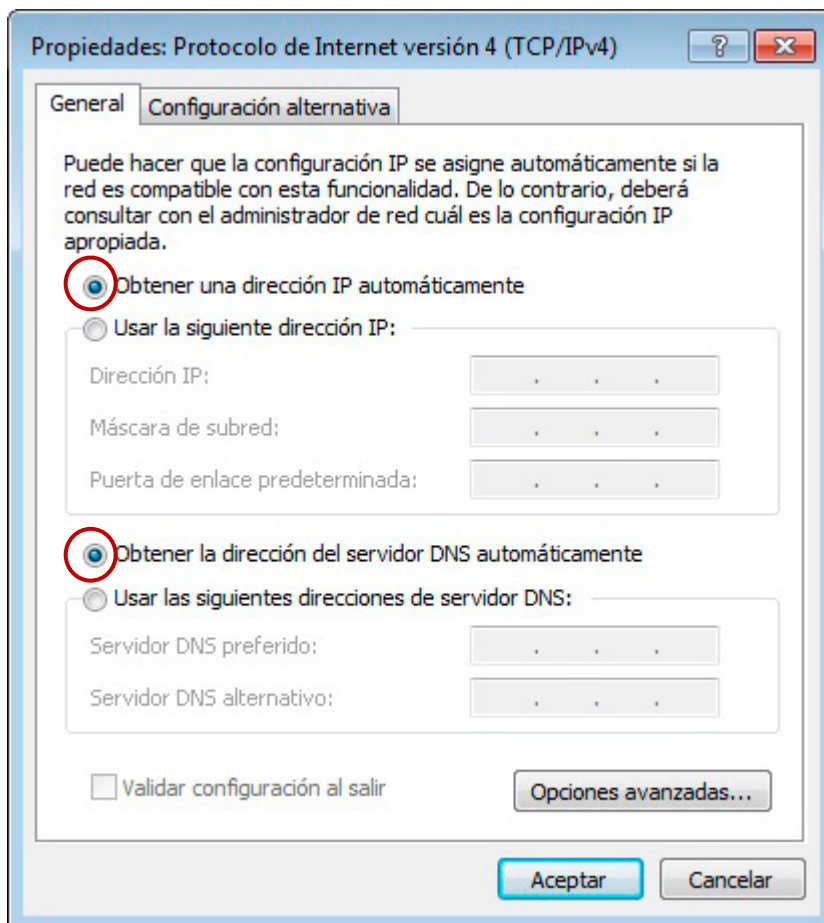


If you usually connect to the Internet from home or other places with wireless and however you are not able to connect at the BC, make sure you don't have a default IP address. In the previous screen, click the right mouse button over *Wireless Network Connection* and select *Properties*.

This brings up the following screen:



Select *Internet Protocol (TCP/IP)* and click the *Properties* button.



At this new screen *Obtain an IP address automatically* and *obtain DNS server address automatically* options should be selected.

**Very important:** Write down your IP and DNS settings before doing the previous step because it will erase them.